



**Rural Municipality of Dauphin**

Box 574 • Hwy. #20A  
 Dauphin, MB R7N 2V4  
 Phone: (204) 638-4531  
 Fax: (204) 638-7598  
 Email: rmoofdphn@mts.net

Reeve: Dennis Forbes  
 CAO: Marlene Durston

**FACT SHEET  
 RM of DAUPHIN  
 MANITOBA • CANADA**



photo: Lucille McKinney

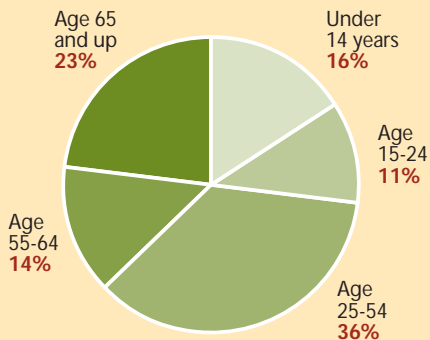
**QUALITY SERVICE TO OUR CITIZENS**

**GEOGRAPHY & FAMILY CHARACTERISTICS**

	Land Area (sq. km)	Population Density per sq. km	Private Households	Number of Families	Average Value of House
RM of Dauphin	1,516.1	1.5	920	710	111,400
Immediate Market Area*	6,454.5	0.3 to 624.9	7,340	4,775	74,700
TOTAL	7,970.6		8,260	5,485	

\* Communities and Municipalities of Dauphin, Ethelbert, Gilbert Plains, Mossey River, Ochre River, Ste. Rose, Grandview, Lawrence, Winnipegosis and Valley River.

Source: Statistics Canada 2006 Census

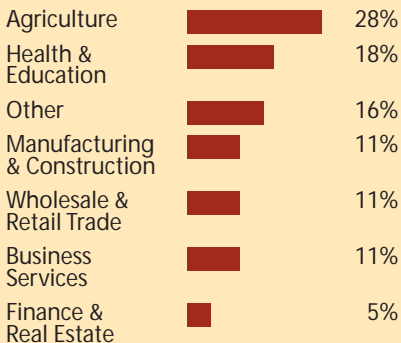


**POPULATION (male and female)**

	2006 Census	% of Population > 15 years	Age 0 - 14	Age 15 - 64	Age 65 and over	Median Age
RM of Dauphin	2,328	82.4%	410	1,625	290	43.0
Immediate Market Area*	16,655	82.4%	2,850	9,800	3,965	46.0
TOTAL	18,983	82.4%	3,260	11,425	4,255	44.5

\* Communities and Municipalities of Dauphin, Ethelbert, Gilbert Plains, Mossey River, Ochre River, Ste. Rose, Grandview, Lawrence, Winnipegosis and Valley River.

Source: Statistics Canada 2006 Census



**LABOUR FORCE (male and female)**

	Participation Rate	Employment Rate	Unemployment Rate	Median Earnings <sup>2</sup> (full-time/year)
RM of Dauphin	77.6%	75.3%	2.7%	29,401
Immediate Market Area <sup>1</sup>	60.4%	55.6%	8.3%	27,029
AVERAGE	69.0%	65.4%	5.5%	28,215

1. Communities and Municipalities of Dauphin, Ethelbert, Gilbert Plains, Mossey River, Ochre River, Ste. Rose, Grandview, Lawrence, Winnipegosis and Valley River.  
 2. Median earnings also includes farm income.

Source: Statistics Canada 2006 Census

**COMMUTER SHED POPULATION & LABOUR FORCE (from City of Dauphin)**

	Total Pop.	Total Dwellings	Median Age	Males	Females	Age 0-19	Age 20-44	Age 45-64	Age 65 & Over
50 mile Radius	29,044	16,097	43.6	14,296	14,749	7,618	7,472	8,019	5,915
75 mile Radius	64,546	31,796	41.8	32,016	32,530	18,151	16,932	17,112	12,363

Source: PCensus for MapPoint

# FACT SHEET RM of DAUPHIN

## TRANSPORTATION

- Air:** Dauphin Municipal Airport
- Regional airport
  - Paved runways of 2,750 and 5,000 feet long
  - Daily service to Winnipeg
  - Perimeter Airlines
  - Night and all-weather facilities
  - Avgas and aircraft maintenance
  - Capable of landing 737 and Hercules Transport
- Rail:** Canadian National Rail Secondary Mainline  
Via Rail Canada passenger service
- Road:** Provincial Trunk Highways #5, #10 and #20  
Greyhound Bus Lines  
Gardewine North trucking, Purolator & Loomis Courier  
Local short/long-distance trucking companies

## ENERGY & COMMUNICATIONS

- Hydro electricity:** 3 phase power supply  
Provided by Manitoba Hydro
- Natural Gas:** 3" Natural Gas Line (49,560 mcf)  
Provided by Manitoba Hydro
- Communications:** Digital tower, DSL High Speed Internet  
Provided by MTS Allstream, I-Netlink and Xplornet  
WCG<sup>tv</sup> provided by Westman Communications Group

## WATER & WASTE MANAGEMENT

- Water Supply Source:**
- Edwards Lake/Creek System and Vermillion Reservoir
- Waste Management:**
- Total capacity of storage site is 196 million gallons
  - Currently operating at 75% capacity
  - \$2.5 million upgrading 2003 and 2005
  - 2 landfills (one at Sifton; one shared with City of Dauphin)
  - Recycling program

## INDUSTRIAL PARK - Fully Serviced

Land available in Sifton, Dauphin and other areas

## PLANNING & CONSERVATION DISTRICT MEMBER

Member of Dauphin Planning District  
Member of Intermountain Conservation District

## TOTAL REAL PROPERTY ASSESSMENT - 2009

Rural Municipality of Dauphin \$212,181,200

## EDUCATION

**Total K-12 School Enrollment:** 1,769  
(source: Mountain View School Division, February 2009)

- Ecole MacNeill K-6 School 149
- Henderson Elementary 239
- Barker K-6 School 269
- Smith-Jackson K-6 School 95
- Whitmore K-6 School 127
- Mackenzie Middle 7-8 School 274
- Dauphin Regional Comprehensive School 616

## Post-secondary School:

- Assiniboine Community College (Dauphin) varies
- Campus Manitoba (Dauphin) varies
- College & University available through Continuing Education & Distance Education

## SERVICES

**Fire Department (2003):** Total of 35 member volunteers  
1 rural tanker, 4 pumper trucks,  
1 aerial ladder, 3 rescue wagons,  
1 portable trailer, 1 kodiak rescue  
boat, 1 snowmobile rescue sleigh,  
jaws-of-life

**Ambulance:** 4 ambulances, 24-hour service  
Advanced life support service

**Police:** Royal Canadian Mounted Police (RCMP)  
24-hour service  
Rural Crime Watch program

**Post Office:** Full Service

**Local Media:** *Dauphin Herald* newspaper (weekly)  
*Parkland Shopper* newspaper (weekly)  
730 CKDM radio (Dauphin)

**Licensed Day Care:** List available at MB Child Day Care office

## HEALTH

### Dauphin Regional Health Centre:

- 107 beds
- Laboratory testing, x-ray, EKG, CT scanner, hemodialysis, ultra-sound, fluoroscopy, medical and surgical wards
- Intensive Care Unit
- Parkland Family Medicine Residency Program
- Community Health Services
- 911 emergency services

### Special Care Services:

**Doctors:** 21 and visiting medical staff available

**Dentists:** 8

**Optometrists:** 3

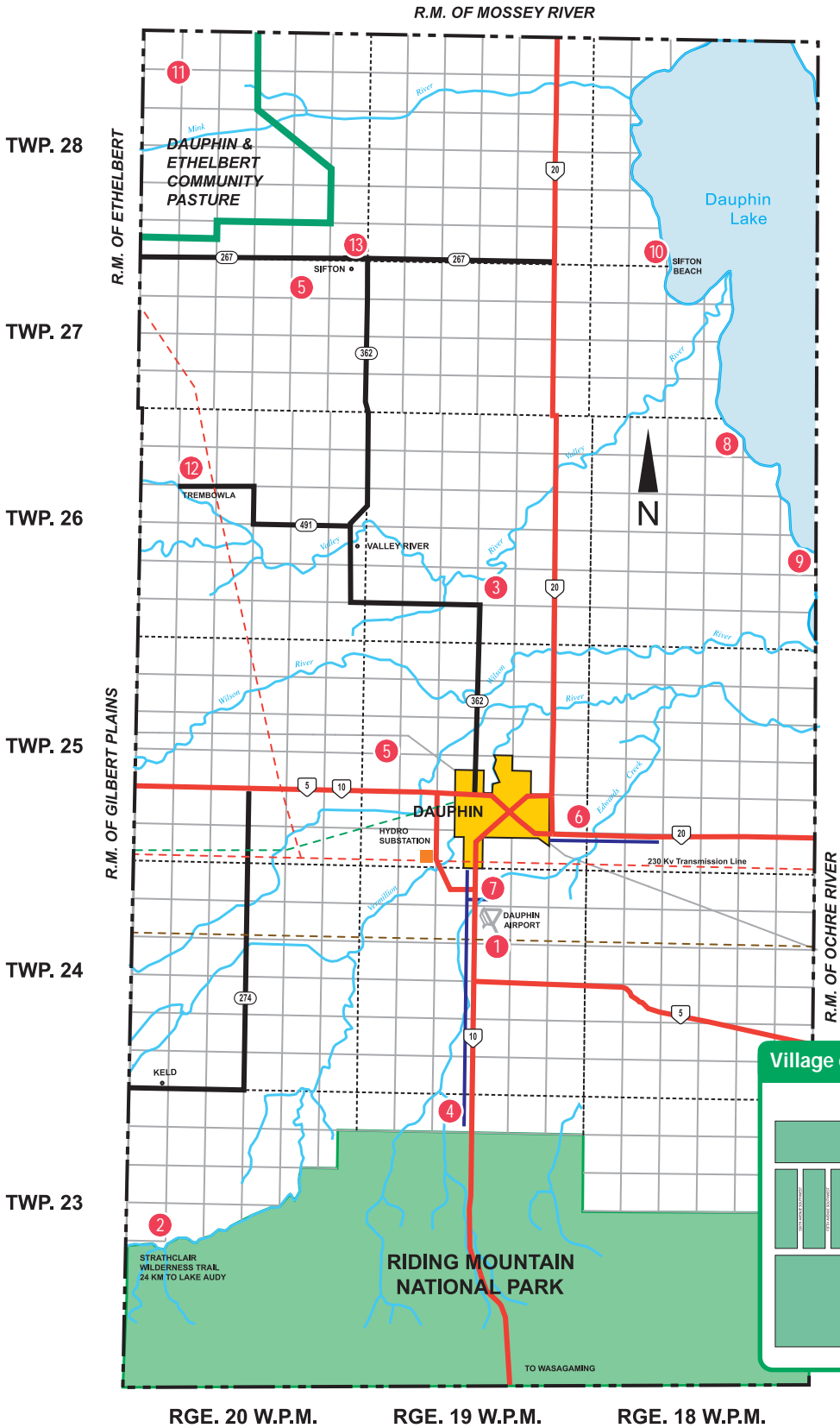
**Chiropractors:** 4

**Personal Care Home:** 70 beds

**Other Services:** Handi-van  
Home Care & Meals on Wheels  
Telehealth

## RECREATION

- Parkland Recreation Complex:
  - Curling rink - 6 sheets of ice
  - Indoor leisure & waded pool, waterslide, 2 indoor arenas,
- 1 outdoor arena
- 18-hole golf course (RM of Ochre River)
- Beach and campgrounds
- Vermillion Park Sportsplex (baseball & soccer)
- Selo Ukraina amphitheatre (10,000 seats)
- International festivals: National Ukrainian Festival, Countryfest and Jesus Manifest
- Historical sites and district museums

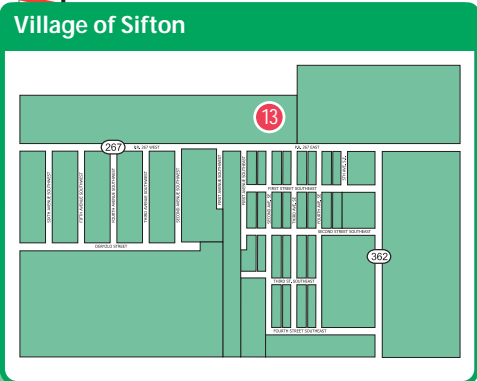


**# Legend**

- 1 Airport
- 2 Keld Park
- 3 Community Well
- 4 Selo Ukraina Site
- 5 Landfill
- 6 Residential Development (Eclipse)
- 7 Residential Development (Lockville)
- 8 Bayduza Cottage Development
- 9 Stoney Point Beach
- 10 Sifton Beach Park and Campground
- 11 Dauphin & Ethelbert Community Pasture
- 12 Trembowla (Heritage Site)
- 13 Sifton Industrial Land

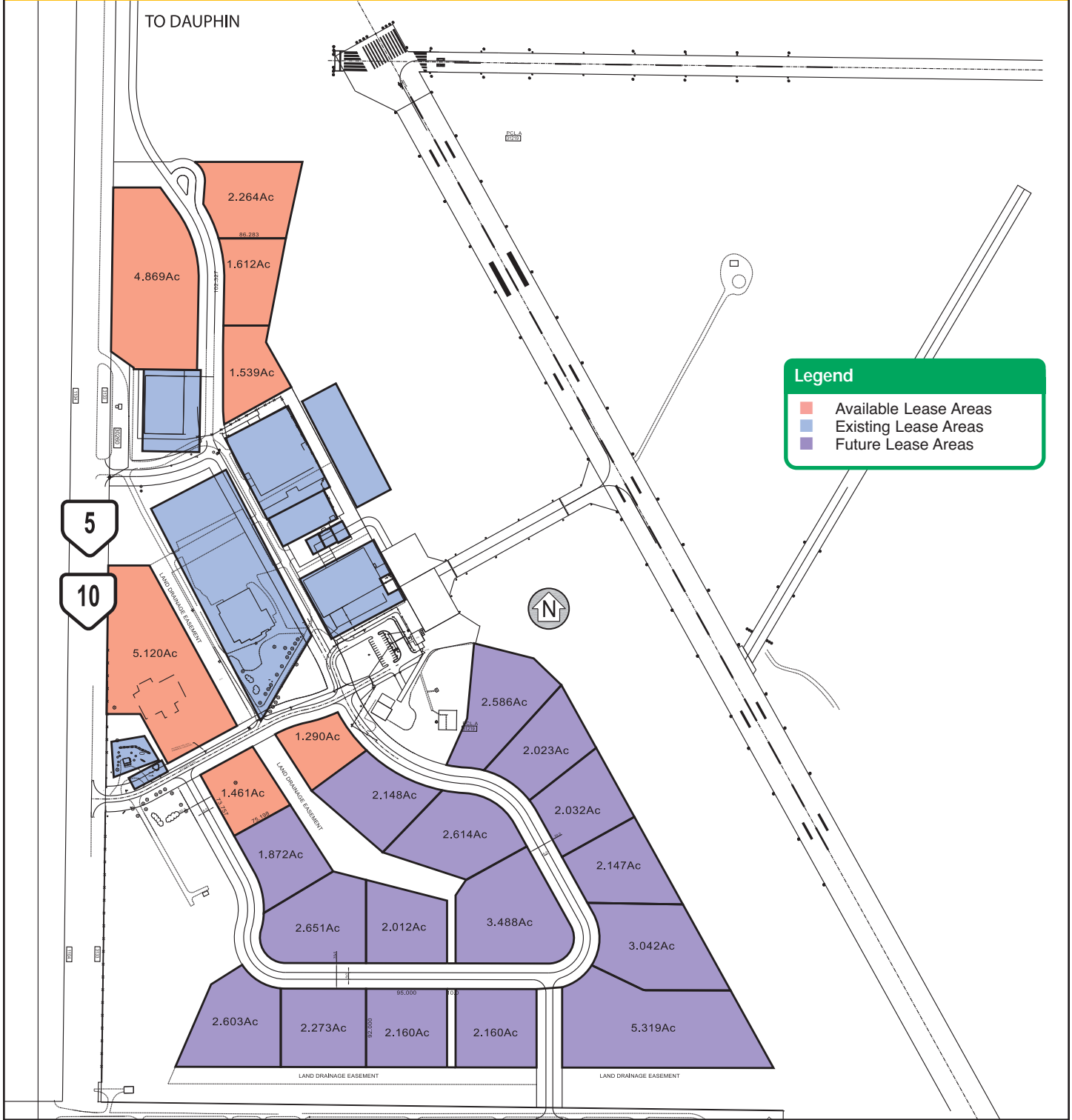
  

- Provincial Hwy.
- Provincial Road
- Municipal Boundary
- Township Boundary
- Section Boundary
- Municipal Water Pipeline
- Hydro Line (230 kV)
- 3-Phase Power Line
- Natural Gas Pipeline
- Russell Trail
- Railway



# FACT SHEET RM of DAUPHIN

## BILLY BARKER AIRPORT (DAUPHIN AIRPORT)



414 Main Street  
P.O. Box 759  
Grandview, Manitoba R0L 0Y0  
Canada

Phone: (204) 546-2915  
Fax: (204) 546-2909  
Email: [parc@mts.net](mailto:parc@mts.net)